

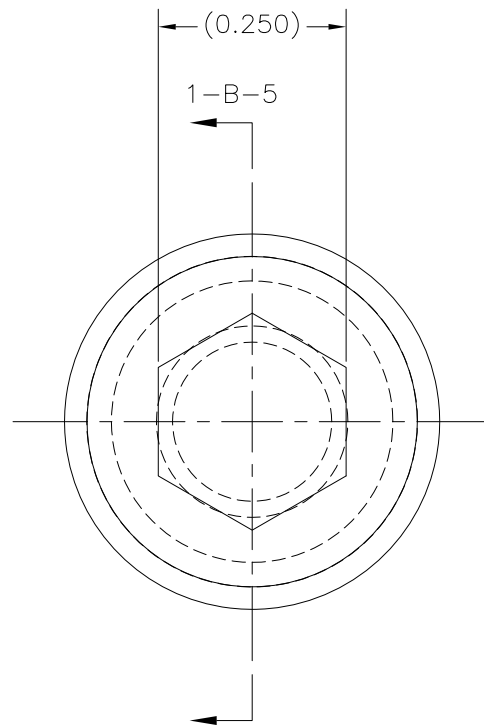
REVISIONS				
NO	DESCRIPTION	DATE	BY	APR/DATE
0	ISSUED FOR MANUFACTURE	2/21/11		

NOTES:

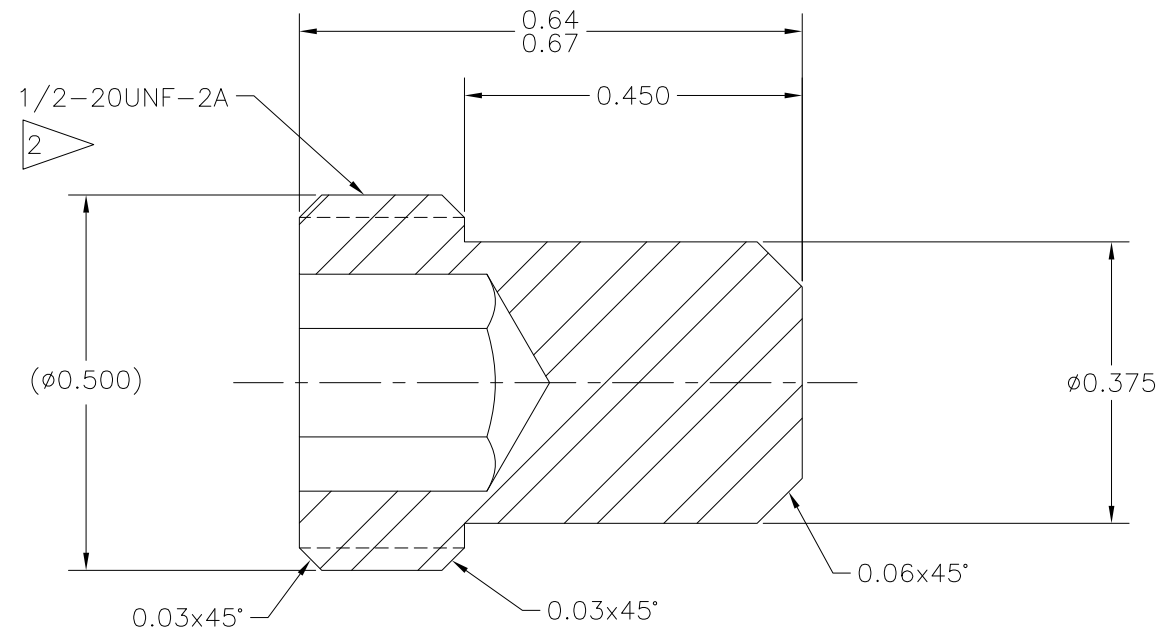
1. MATERIAL: ALLOY STEEL (BLACK FINISH)  
 1/2-20UNF x 3/4" LG. CUP  
 POINT SET SCREW. EXAMPLE.  
 McMASTER #91375A732

2. 1/2-20UNF-2A  
 60° V-THREAD  
 EXTERNAL CLASS 2A  
 MAJOR DIA. = 0.4987/0.4906

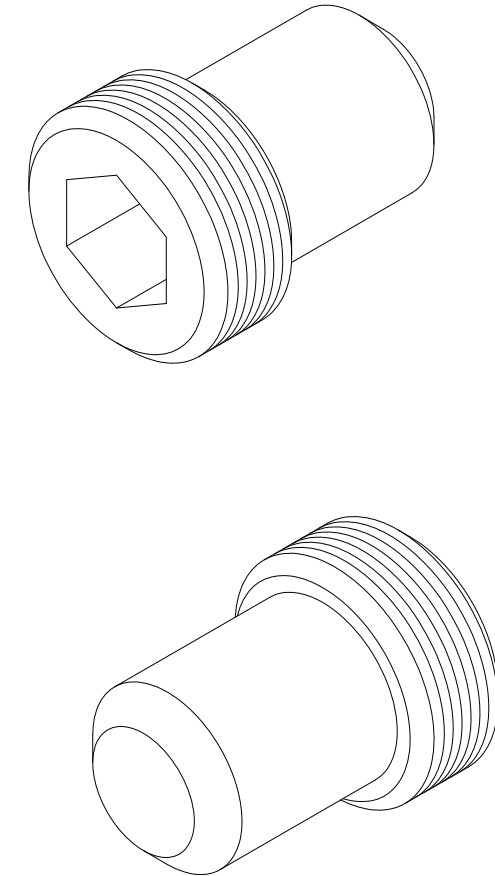
3. WEIGHT: 0.021 LBS.



VIEW 1-B-7  
 ERS ALIGNMENT SCREW



SECTION 1-B-5  
 REF. 1-C-7



PICTORAL 1-B-2  
 ERS ALIGNMENT SCREW  
 N.T.S.

TOLERANCES: UNLESS OTHERWISE SPECIFIED 0.X ± 0.030 0.XX ± 0.010 0.XXX ± 0.005 ANGLES ± 1/2° BREAK EDGES 0.015 x 45° MIN. FINISH 125 ✓ [0.010]A	PROPRIETARY NOTICE THIS DRAWING AND THE INFORMATION IT CONTAINS ARE CONSIDERED CONFIDENTIAL, AND MAY NOT BE REPRODUCED, COPIED OR USED, IN PART OR IN WHOLE, WITHOUT PRIOR WRITTEN CONSENT.	<b>Integrated Ocean Drilling Program</b> TEXAS A&M UNIVERSITY 1000 DISCOVERY DRIVE COLLEGE STATION, TX 77845	
		SHEET 1 OF 1 SCALE 8:1 BY MM DATE 2/21/11	TITLE ERS ALIGNMENT SCREW SYSTEM ERS v.2 ASSEMBLY 3" ERS APPROVED DH CHECKED DH